

Ukiah Crossroads

190 Ford Road, Ukiah, CA

RETAIL SPACE FOR LEASE



JOHN SCHAEFER

415-235-8115 Direct

john@keystonerea.com

CA License #01251740



KEYSTONE
REAL ESTATE ADVISORS



PROPERTY HIGHLIGHTS

- A 106,460 SF, Freeway-Visible and Interchange Accessible Neighborhood Shopping Center
- Anchored By: Raley's Supermarket, In-N-Out Drive-Thru, O'Reilly Auto Parts, and Dollar Tree
- Completely Remodeled Shopping Center With \$5 Million Renovations to Raley's
- Fantastic 1.39 Acre Development Opportunity
- Tremendous HWY 101 Visibility



JOHN SCHAEFER

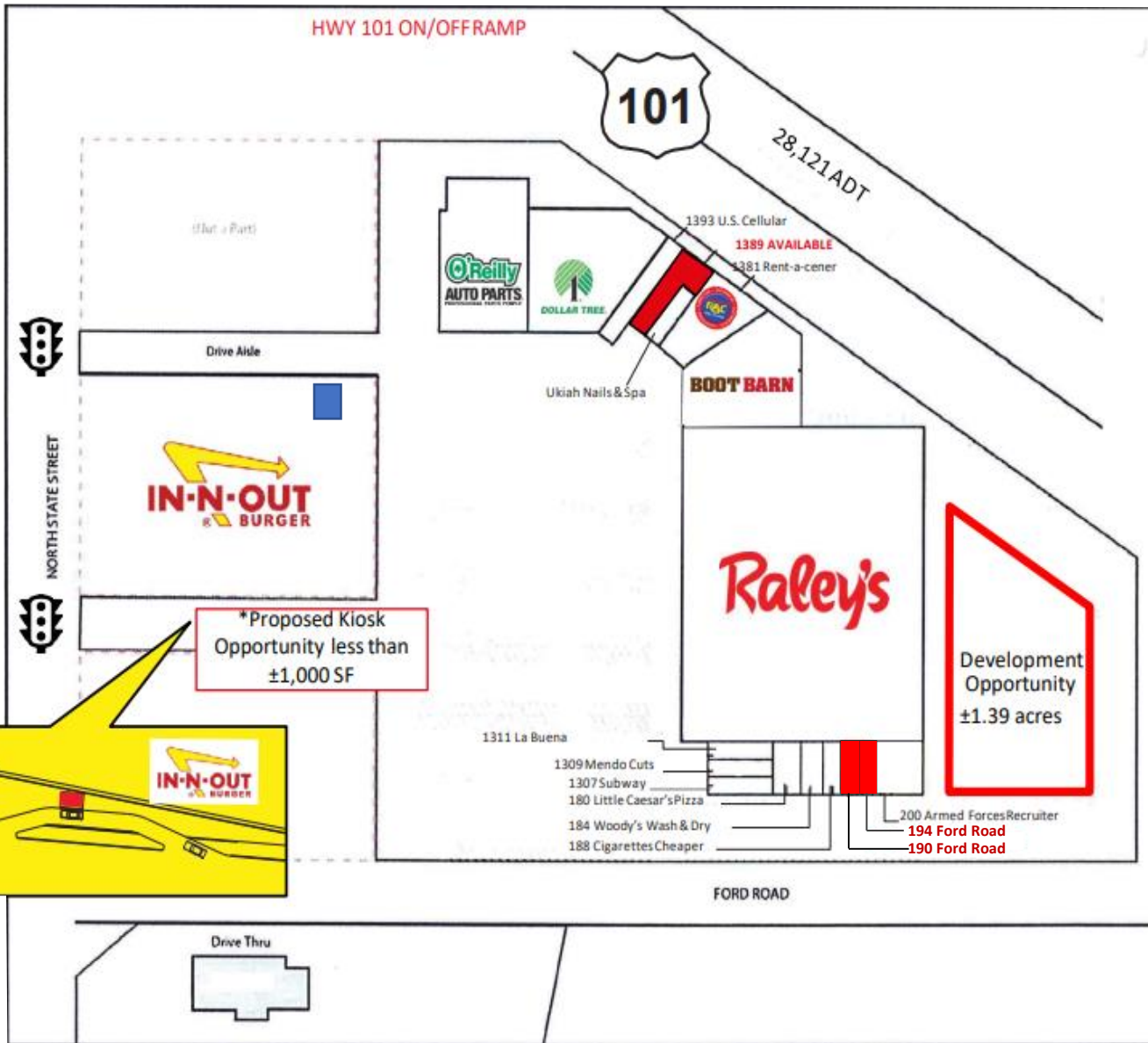
415-235-8115 Direct

john@keystonerea.com

CA License #01251740



KEYSTONE
REAL ESTATE ADVISORS



<u>Availability</u>	
<u>Address</u>	<u>SF</u>
190 Ford Rd.	± 945
194 Ford Rd.	± 1,250
1389 N State St.	±2,000
Development Opportunity	±1.39 Acres
Kiosk Opportunity	>1,000



JOHN SCHAEFER
 415-235-8115 Direct
 john@keystonerea.com
 CA License #01251740





190 Ford Rd.



1389 N State St.



1389 N State St.



194 Ford Rd.

JOHN SCHAEFER

415-235-8115 Direct

john@keystonerea.com

CA License #01251740





JOHN SCHAEFER

415-235-8115 Direct

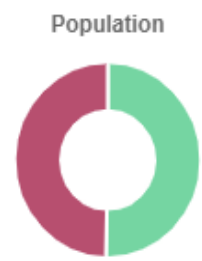
john@keystonerea.com

CA License #01251740



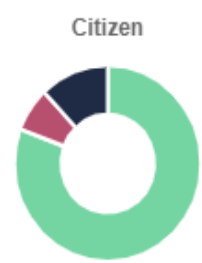
Ukiah Population Demographics

		Y-o-Y Change
Total Population	15,943	0.0%
Male Population	8,018	0.2%
Female Population	7,925	-0.3%



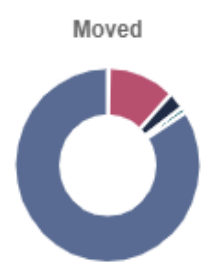
- Male Population 50.29%
- Female Population 49.71%

		Y-o-Y Change
Median Age	38.1	3.8%
Citizen US Born	12,869	-0.6%
Citizen not US Born	1,168	11.7%
Not Citizen	1,906	-2.3%



- Citizen US Born 80.72%
- Citizen not US Born 7.33%
- Not Citizen 11.96%

		Y-o-Y Change
Moved from Abroad	33	3,200.0%
Moved from Same Country	1,844	-8.4%
Moved from Same State	457	50.8%
Moved from Different State	147	-3.3%
Same House as Last Year	13,180	0.3%



- Moved from Abroad 0.21%
- Moved from Same Country 11.77%
- Moved from Same State 2.92%
- Moved from Different State 0.94%
- Same House as Last Year 84.16%

© 2021 Keystone Real Estate Advisors, Inc. (KREA) The information contained in this document has been obtained from sources believed reliable. While KREA does not doubt its accuracy, KREA has not verified it and makes no guarantee, warranty or representation about it. It is your responsibility to independently confirm its accuracy and completeness. Any projections, opinions, assumptions or estimates used are for example only and do not represent the current or future performance of the property. The value of this transaction to you depends on tax and other factors which should be evaluated by your tax, financial and legal advisors. You and your advisors should conduct a careful, independent investigation of the property to determine to your satisfaction the suitability of the property for your needs. KREA and the KREA logo are service marks of Keystone Real Estate Advisors, Inc. and/or its affiliated or related companies in the United States and other countries. All other marks displayed on this document are the property of their respective owners. Photos herein are the property of their respective owners and use of these images without the express written consent of the owner is prohibited.

JOHN SCHAEFER
 415-235-8115 Direct
 john@keystonerea.com
 CA License #01251740

